

4 ATTRIBUTE ADMINISTRATION

Selecting the “Attributes” link accesses attribute Administration.

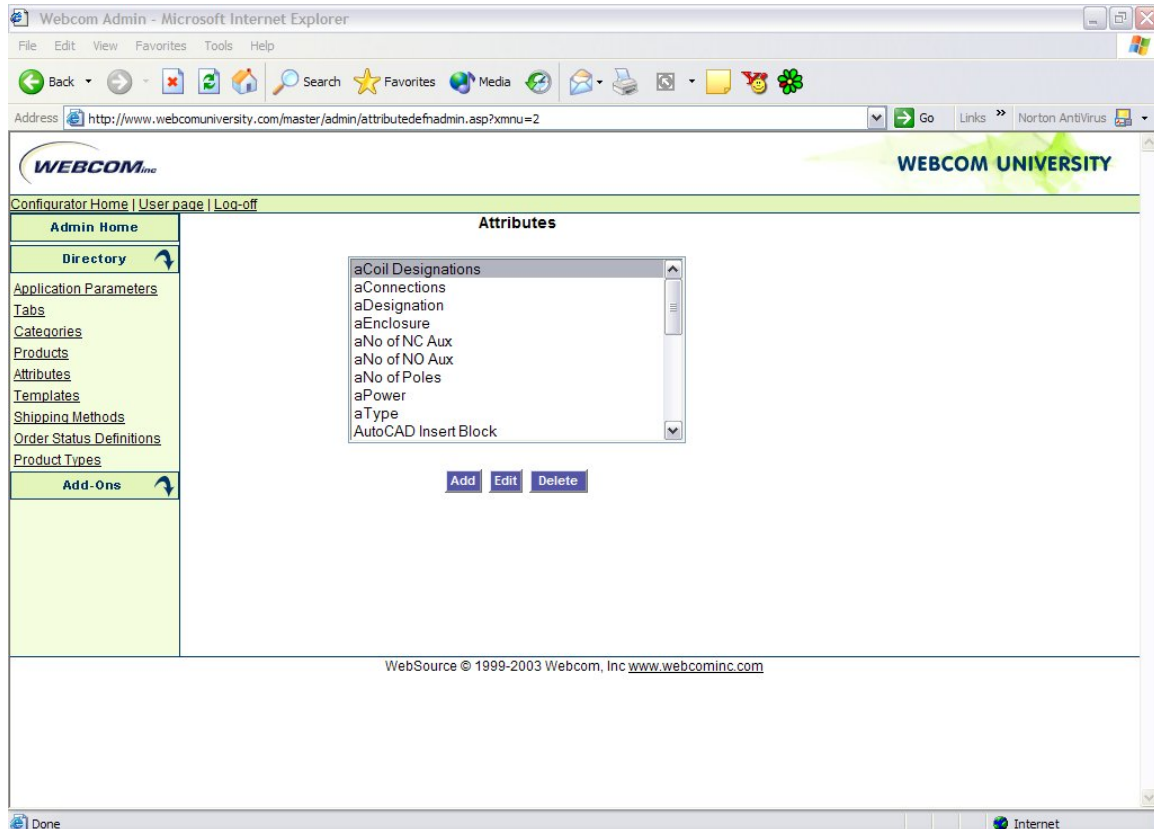


Figure 4-1 Attribute Administration

All the existing Attributes are shown in the scroll bar. This would include those set up during previous modeling activities. From this screen Attributes can be added, deleted or edited.

Selecting Add brings up a blank Attribute Definitions page as shown in Figure 4-2. Selecting an attribute and then Edit would bring up the previously defined attribute page and allow editing of the defined values.

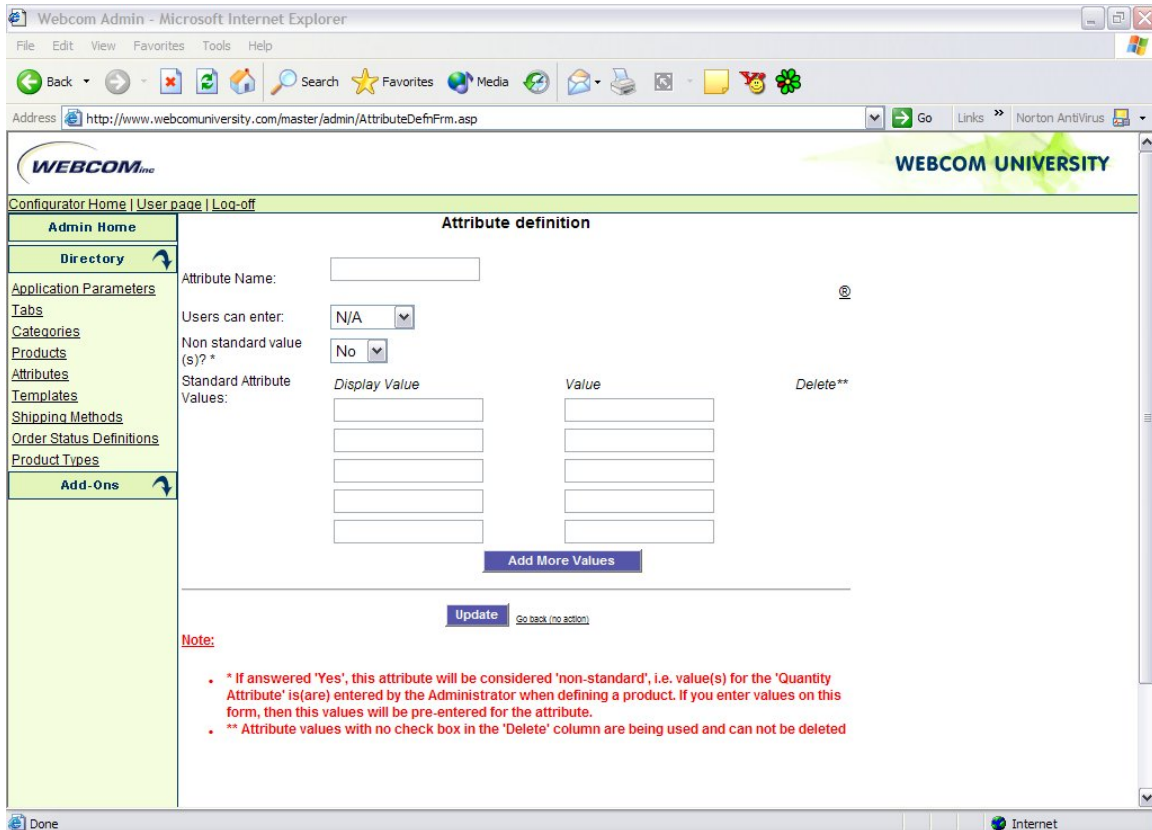


Figure 4-2 Attribute Definitions

The properties that need to be defined are:

Attribute Name - Enter name that describes attribute
 User Can Enter (Drop Down – mutually exclusive with Non Standard values) Choices

N/A – No User Entry

Quantity - Integer

String – Free form text

Number – Can set min and max

Date – Can set range

Non Standard Values – No/Yes

Standard Attribute Values

Display Value – Value shown on screen to user.

Value – typically this is an abbreviation that can be related to the display value. Most often used in Attribute Dependencies, see example on page 60.

This initial screen has room for 5 values. More than 5 can be modeled by selecting "Add More Values."