

BOM ADMIN

The BOM Product Configurator Software Module is a very powerful tool which allows quick rule based engineering of product configurations. An unlimited number of configurations can be created using a small number of components. This Chapter will outline the steps necessary to set up the BOM Product Configurator Software Module.



Figure 53-1 – BOM Admin

Select the "BOM Admin" link under the "Add-Ons" drop down menu as shown in Figure 53-1. This will bring up the "BOM Admin" screen shown in Figure 53-2.

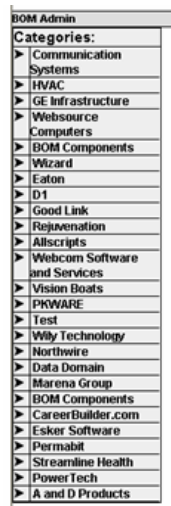


Figure 53-2 – BOM Admin

Select Category as shown in Figure 53-2. This will display the Product tab.

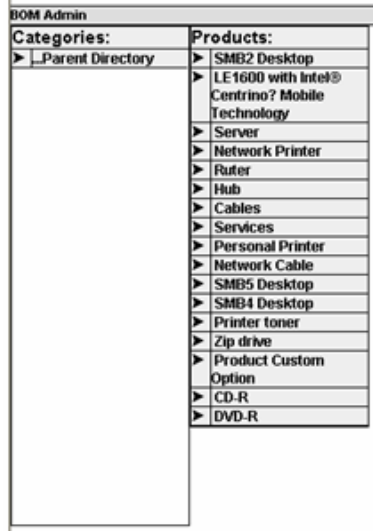


Figure 53-3 – Product Selection

Select the product name located under the product tab to create a BOM.

There are 3 sections to create a product BOM

1. Product Attributes - “Product Attributes” section is already populated.
2. Product Part Types used as BOM Components
3. Selection Charts

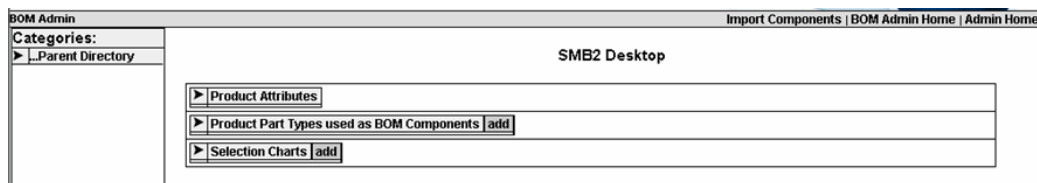


Figure 53-4 – Product

Click on “Add” located to the right of the “Product Part Types used as BOM Components”.

BOM Admin	
Categories:	
▶ Communication Systems	Add
▶ HVAC	Add
▶ GE Infrastructure	Add
▶ Webservice Computers	Add
▶ BOM Components	Add
▶ Wizard	Add
▶ Eaton	Add
▶ D1	Add
▶ Good Link	Add
▶ Rejuvenation	Add
▶ Allscripts	Add
▶ Webcom Software and Services	Add
▶ Vision Boats	Add
▶ PKWARE	Add
▶ Test	Add
▶ Wily Technology	Add
▶ Northwire	Add
▶ Data Domain	Add
▶ Marena Group	Add
▶ BOM Components	Add
▶ CareerBuilder.com	Add
▶ Esker Software	Add
▶ Permabit	Add

Figure 53-5 –Category selection for Part Type

Click “Add” next to the Category which will be the Part Type for this product, as shown in Figure 53-5.

For Example, we will choose the Category “BOM Components”.

This Category will appear in “Product Part Types used as BOM Components” as shown in Figure 53-6:

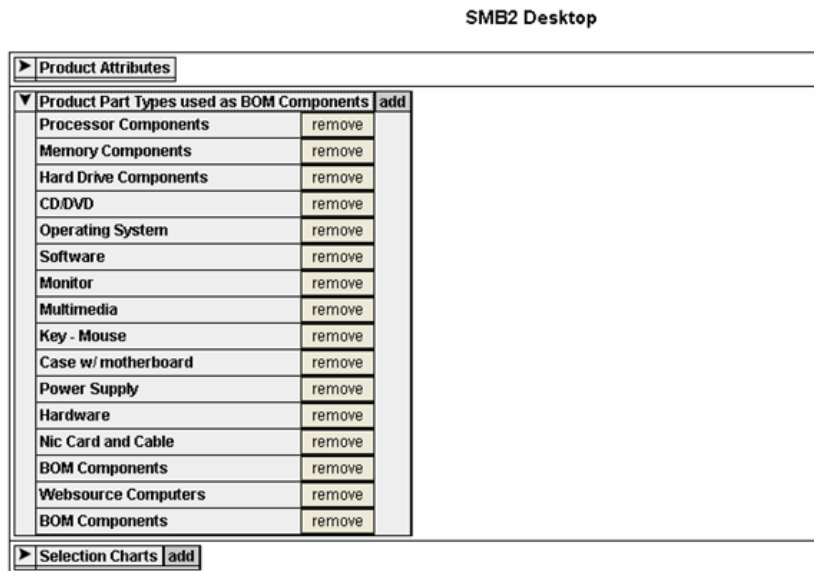


Figure 53-6 – Category – BOM Components

Next we need to add Selection Charts.

Click “Add” which is located to the right of “Selection Charts” .

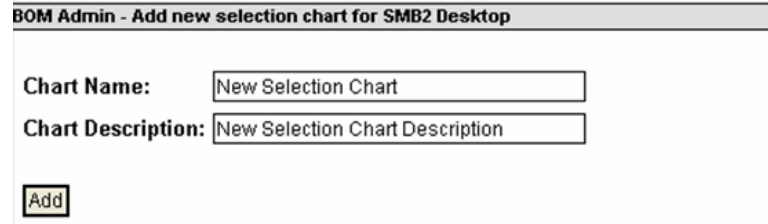


Figure 53-7 – Adding new Selection Charts

Fill in “Chart Name” and “Chart Description” field and click to “Add”. New Selection Cart will be added.

You will need to add a Selection Chart for each product. An example of numerous Selection Charts is shown in figure 53-8.

SMB2 Desktop

▶ Product Attributes						
▶ Product Part Types used as BOM Components add						
▼ Selection Charts add						
Hard Drive BOM Components	remove	import	export	edit attributes	add part types	edit chart
CD/DVD BOM Components	remove	import	export	edit attributes	add part types	edit chart
Operating System BOM Components	remove	import	export	edit attributes	add part types	edit chart
Software BOM Components	remove	import	export	edit attributes	add part types	edit chart
Monitor BOM Components	remove	import	export	edit attributes	add part types	edit chart
Multimedia Bom Components	remove	import	export	edit attributes	add part types	edit chart
Memory BOM Conditions	remove	import	export	edit attributes	add part types	edit chart
Processor Components	remove	import	export	edit attributes	add part types	edit chart
CD or DVD #2 Components	remove	import	export	edit attributes	add part types	edit chart
Hardware	remove	import	export	edit attributes	add part types	edit chart
Misc Components	remove	import	export	edit attributes	add part types	edit chart
Solar Test	remove	import	export	edit attributes	add part types	edit chart
New Selection Chart	remove	import	export	edit attributes	add part types	edit chart

Figure 53-8 – Selection Charts

The import feature can be used to quickly populate Selection Chart rules. This uses Excel spreadsheets in .XLS format in order to import Selection Chart as XLS file as shown in figure 53-9.

Caution - In order for Selection Chart Import to execute correctly these parameters must be met:

1. The chart has to be defined.
2. Name of the chart should match name of the tab in Excel file.
3. All attributes specified in the chart should also be specified in the Excel file. I.E. All attribute values in the Excel file have to be defined in the configurator.

If there is a discrepancy import will fail.

Import a Selection Chart

Note: In order for Selection Chart Import to execute correctly, the chart has to be defined and name of the chart should match name of the tab in Excel file. All attributes specified in the chart should also be specified in the Excel. All attribute values in the Excel file have to be defined in the configurator. If there is a discrepancy, import will fail.

File Name: ▼

Chart Name: Crotch Option

Figure 53-9 – Import Selection Chart

In order to view the loaded .XLS files you must use the “export” feature for exporting Selection Charts.

In order to delete a chart click on the “remove” button.

If you need to add attributes piecemeal you can use “edit attributes” to add individual attributes into Selection Charts, as shown in Figure 53-10.

The export feature can be used to export Selection Charts – just click to “export” and Selection Chart will be exported as shown in Figure 54-9b.



Figure 53-9b – Export Selection Chart

Then just click to “click here” link and download the exported Selection Chart – as shown in Figure 53-9c:



Figure 53-9b – Export Selection Chart – download the Exported Selection Chart

Click to save and save the exported Chart into local disk.

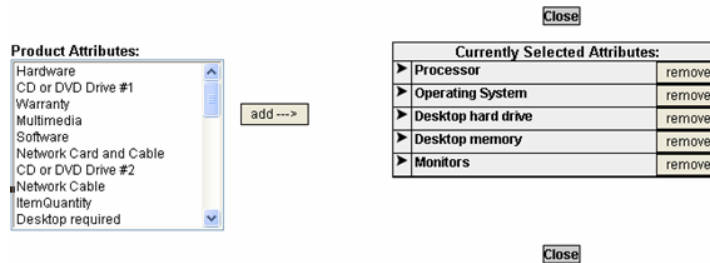


Figure 53-10 – Edit Attributes

Use “add part types” for adding Part Types into Selection Chart, as shown in Figure 53-11.

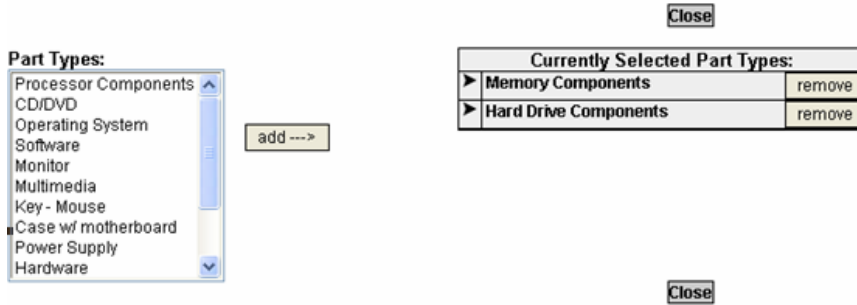


Figure 53-11 – Adding Part Types into Selection Charts

Use “edit chart” to add or modify BOM Rules, as shown in Figure 53-12.

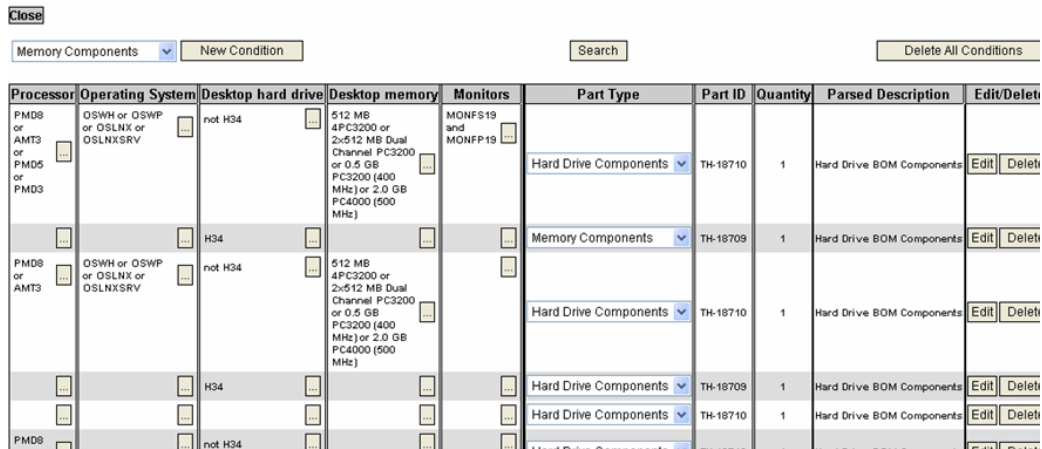


Figure 53-12 – Edit Selection Chart

Click “New Condition” in order to add a new condition.

Screen shown in Figure 53-13 will appear.

Check the “Parsed Part ID” Checkbox.

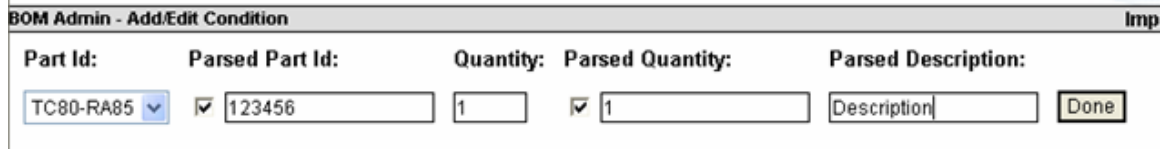
In text field input the product ID you want this rule to display. As shown in figure 53-13 – we will add product ID 123456 to the rule.

Check the “Parsed Quantity” Checkbox.

Enter the Parsed Quantity, for example, enter 1, as shown figure 53-13

Enter Parsed Description text, as shown figure 53-13

Click "Done".



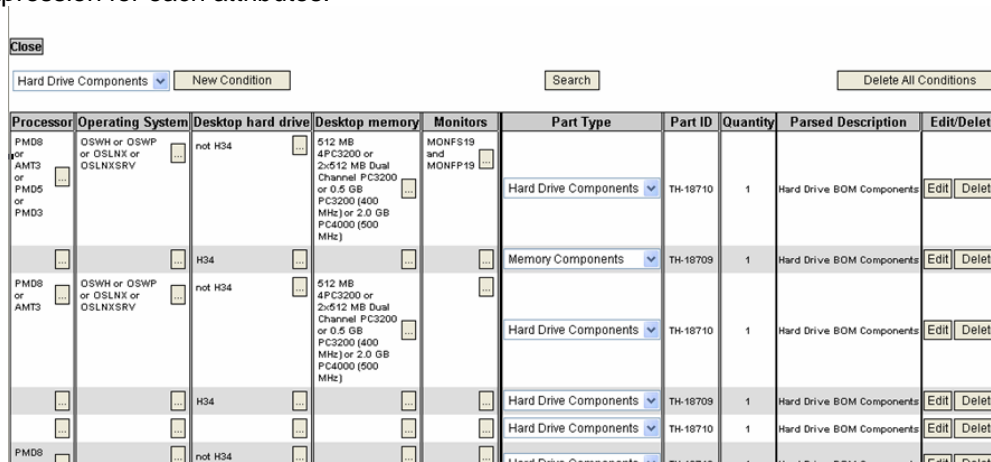
BOM Admin - Add/Edit Condition Imp

Part Id: Parsed Part Id: Quantity: Parsed Quantity: Parsed Description:

Figure 53-13 – Condition

Now we can see the screen like screen shown in Figure 53-14 – top of the page and 53-14-a – bottom of the page.

The Attributes (selected in step 10) have no expressions – we will have to add the expression for each attributes.



Processor	Operating System	Desktop hard drive	Desktop memory	Monitors	Part Type	Part ID	Quantity	Parsed Description	Edit/Delete
PMD8 or AMT3 or PMD5 or PMD3	OSWH or OSWP or OSLNX or OSLNXSRV	not H34	512 MB 4PC3200 or 2x512 MB Dual Channel PC3200 or 0.5 GB PC3200 (400 MHz) or 2.0 GB PC4000 (500 MHz)	MONFS19 and MONFP19	Hard Drive Components	TH-18710	1	Hard Drive BOM Components	Edit Delete
		H34			Memory Components	TH-18709	1	Hard Drive BOM Components	Edit Delete
		not H34			Hard Drive Components	TH-18710	1	Hard Drive BOM Components	Edit Delete
		H34			Hard Drive Components	TH-18709	1	Hard Drive BOM Components	Edit Delete
					Hard Drive Components	TH-18710	1	Hard Drive BOM Components	Edit Delete

Figure 53-14 – Edit Selection Chart - adding expressions for attributes – Top of the page

...	...	H34	Memory Components	TH-18709	1	Hard Drive BOM Components	Edit	Delete
PMD8 or AMT3	OSWH or OSWP or OSLNX or OSLNXSRV	not H34	...	512 MB 4PC3200 or 2x512 MB Dual Channel PC3200 or 0.5 GB PC3200 (400 MHz) or 2.0 GB PC4000 (500 MHz)	...	Hard Drive Components	TH-18710	1	Hard Drive BOM Components	Edit	Delete
...	...	H34	Hard Drive Components	TH-18709	1	Hard Drive BOM Components	Edit	Delete
...	...	not H34	Hard Drive Components	TH-18710	1	Hard Drive BOM Components	Edit	Delete
PMD8 or AMT3	...	H34	Hard Drive Components	TH-18709	1	Hard Drive BOM Components	Edit	Delete
...	...	not H84	Hard Drive Components	TH-18710	1	Hard Drive BOM Components	Edit	Delete
PMD8 or AMT3	not	Hard Drive Components	TH-18710	1	Hard Drive BOM Components	Edit	Delete
...	...	H34	Hard Drive Components	TH-18709	1	Hard Drive BOM Components	Edit	Delete
...	...	H34	Hard Drive Components	TH-18709	1	Hard Drive BOM Components	Edit	Delete
PMD8	...	not H44	MONFS19 or MONFP23	Memory Components	TC80-RA85	1	Hard Drive BOM Components	Edit	Delete
...	Hard Drive Components	123456	1	Description	Edit	Delete

Close

Figure 53-14a – Edit Selection Chart - adding expressions for attributes – Bottom of the page

Now we click to “...” button and we get screen shown in Figure 53-15:

BOM Admin - Add/Edit expression

Expression:

AMT3 and PMD3 and PMD5

and or not

AMT3
PMD3
PMD5
PMD8

append

Save Expression

Figure 53-15

In this Example, “AMT3”, “PMD3”, “PMD5” and “PMD8” are attribute values, “and”, “or” and “not” are the Logical (Boolean) operators. By selecting an attribute and adding a logical operator we can create a logical expression.

For example: “AMT3 and PMD3 and PMD5” as shown in Figure 53-15.

To save click “Save Expression”.

Repeat this step for every attribute in this rule.

When we have inserted the expressions for all attributes we have built one rule.

Repeat all steps to create rules you have in the selection chart.

When we have completed all Selection Charts we have finished the BOM for one product.

Repeat these steps to finish another BOM for another product.

Once BOMs are created the public will see a “View BOM” button will appear, as shown in figure 53-16.

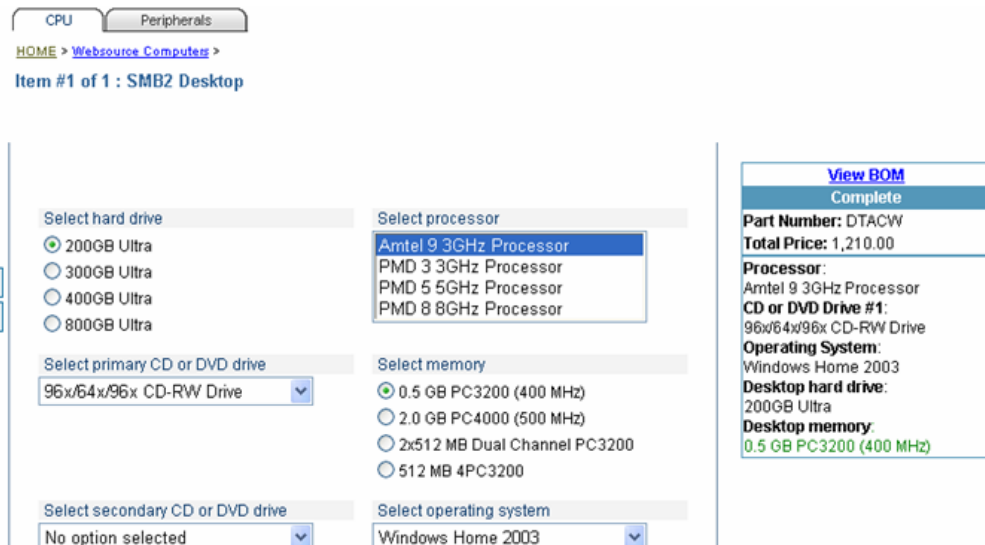


Figure 53-17 – Public View – “View BOM” Link

If we click “View BOM” we will see the BOM Selection Charts results, as shown in Figure 53-18.

Execution time: 0.359375sec

BOM for FG p/n: 611NB-P82H22-DVD64-DVD64-WH03

Category	Part Number	Item Issue	Quantity
*16 CD/DVD/CD/DVD BOM Components	TT-007822	48x DVD+RW/+R Drive w/CD-RW (Business)	1
*22 Operating System/Operating System BOM Components	OSB-03WH	Windows Home 2003 (Business & LapTop)	1
*98 Processor Components/Processor Components	TC01-MB17	PMD 15- 8GHz Processor with 2 GHz FSB	1
*112 CD/DVD/CD or DVD #2 Components	TT-007822	48x DVD+RW/+R Drive w/CD-RW (Business)	1
*126 Case w/ motherboard/Misc Components	5332934-21	High Speed CPU Case	1
*130 Power Supply/Misc Components	HS7-38296	High Speed CPU Power Supply - 900W	1
*132 Key - Mouse/Misc Components	4799-0054	Cordless Keyboard	1
*133 Key - Mouse/Misc Components	517-0561	Corless Mouse	1
*7374 Hard Drive Components/Hard Drive BOM Components	TH-18710	800GB Ultra ATA/400	1
*7376 Hard Drive Components/Hard Drive BOM Components	TH-18710	800GB Ultra ATA/400	1
*7377 Hard Drive Components/Hard Drive BOM Components	TH-18710	800GB Ultra ATA/400	1
*7379 Hard Drive Components/Hard Drive BOM Components	TH-18710	800GB Ultra ATA/400	1
*7380 Hard Drive Components/Hard Drive BOM Components	TH-18710	800GB Ultra ATA/400	1
*7455 Power Supply/Introduction	us.doc	High Current Power Supply - 650W	1
*7481 Memory Components/mem	10GB SDRAM_us.doc	1GB 333MHz DDR SDRAM	1
*7487 Memory Components/mem	1GB 333MHz DDR SDRAM_us.doc	1GB 333MHz DDR SDRAM	1
*7517 Hard Drive Components/drive	200GB Ultra_us.doc	800GB Ultra ATA/400	1

Figure 53-18 – BOM Selection Chart Results