

The first screen that appears when defining templates is shown in Figure 21-2. EXIT TEMPLATE returns to administration. “(1)?” Launches a pop-up where the template is defined. This is shown in Figure 21-3.

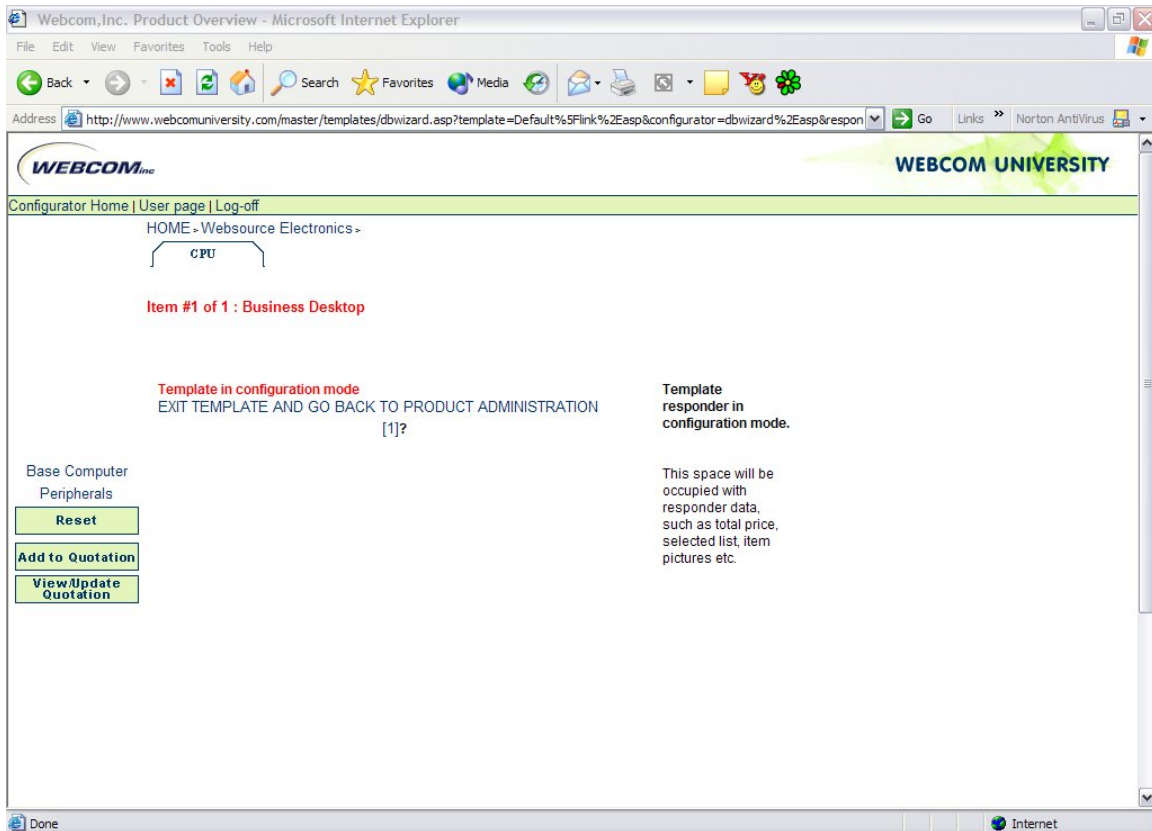


Figure 21-2 Defining Templates

Templates are used to choose which attributes will be shown to the user. Attributes and attribute values can be selected individually. The most commonly used parseable macro is "Total Product Price. This displays all the attributes. Select total product price from the macro dropdown. Then click on insert. The attributes are then selected and placed in the Current Schema and "TotalPrice" is added to Field Content. Then select Add New/Modify followed by Close to close the pop up window.

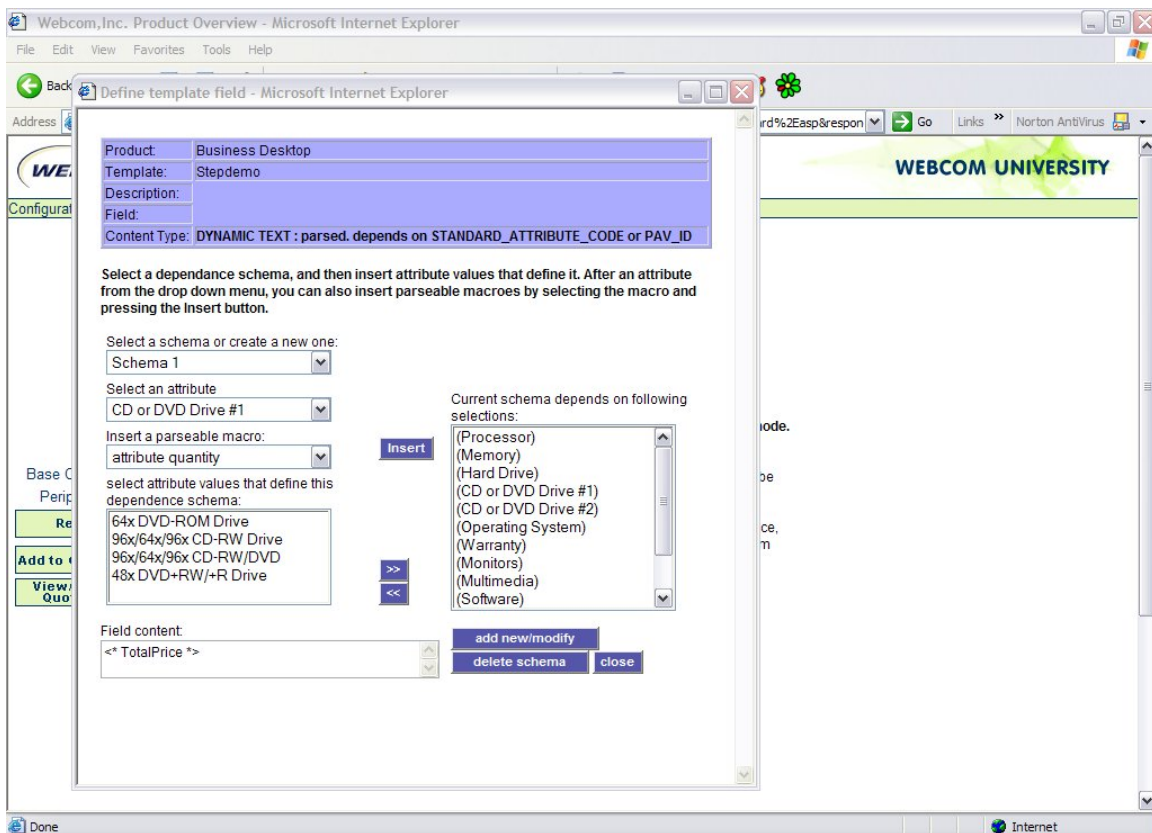


Figure 21-3 Defining Templates