

EFFECTIVITY DATES

In order to proactively model product as they will behave in the future, or to be able to simulate how products behaved in the past, WebSource configurator supports **Effectivity Dates**.

Administration:

Effectivity dates can be applied to Categories, Products, Attributes and Rules. If the effectivity date is left blank the corresponding category, product, attribute or a rule is effective. However, if a rule, for example is specified to be effective from 01/01/05 thru 01/01/06, this rule would not execute prior to 01/01/05 or after 01/01/06. The Figure 23-1 shows effectivity dates fields used when defining a product.

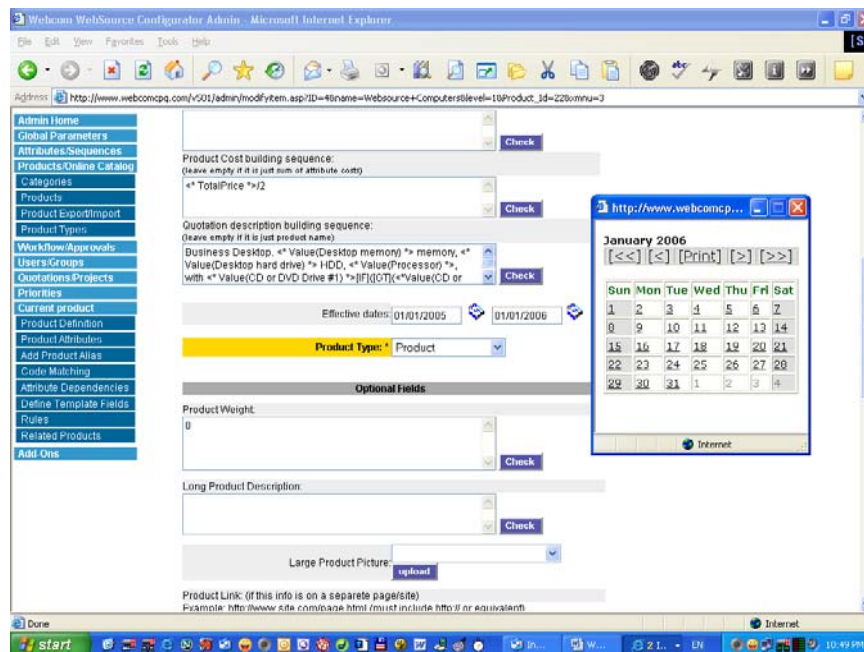


Figure 23-1 Effectivity Dates

User side:

In a typical application, the effectivity dates are transparent to the users. However, it is possible to configure a WebSource installation to ask the user for a desired effectivity date and the rules engine would use the supplied date instead of the current date.