

There are also two functions that are not user inputs, Hidden Calculated Match First Upper and Hidden Calculated Match First Lower, but depend on other input made by the user.

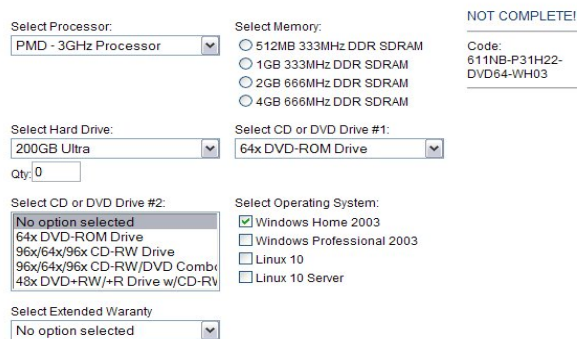
#### Hidden Calculated Match First Upper

This attribute is not visible to the user. It can be a formula or logical expression. The results of this are dependent on values of other attributes and that the hidden expression calculates. One example could be converting unit of measure. The output can be just the results of the calculation if break points are not specified. Or can match first upper if break points are specified.

#### Hidden Calculated Match First Lower

This is the same as Hidden Calculated Match First Lower, except would match to first lower if breakpoints were specified.

Examples of displays: Drop Down, List box, Radio Buttons and Check Boxes are shown in Figure 17-3.



NOT COMPLETE!

Select Processor:

Select Memory:  512MB 333MHz DDR SDRAM  
 1GB 333MHz DDR SDRAM  
 2GB 666MHz DDR SDRAM  
 4GB 666MHz DDR SDRAM

Select Hard Drive:

Select CD or DVD Drive #1:

Qty:

Select CD or DVD Drive #2:   
64x DVD-ROM Drive  
96x/64x/96x CD-RW Drive  
96x/64x/96x CD-RW/DVD Comb  
48x DVD-RW/+R Drive w/CD-RV

Select Operating System:  
 Windows Home 2003  
 Windows Professional 2003  
 Linux 10  
 Linux 10 Server

Select Extended Warranty:

Figure 17-3 Display Examples

Custom Range Error Text - Enter custom error message.  
This message is associated with Free Input and will be displayed if an invalid value is entered.

Step – Enter Step number here.

Sub Rank – Enter Sub Rank number. This number is sequence that the attribute value will be displayed for selection on the user page.

Graphical placement of attributes is shown in Figure 17-4. In addition to being able to place attributes into 1, 2 or 3 vertical columns, it is also possible to position attributes anywhere in the configuration layer using absolute coordinates in pixels.

Admin side:

In order to specify attributes absolute position on the screen, administrator needs to provide X and Y coordinates. Upper left corner is position 0,0. Optionally, administrator can specify the width, height, and the background color for each attribute.

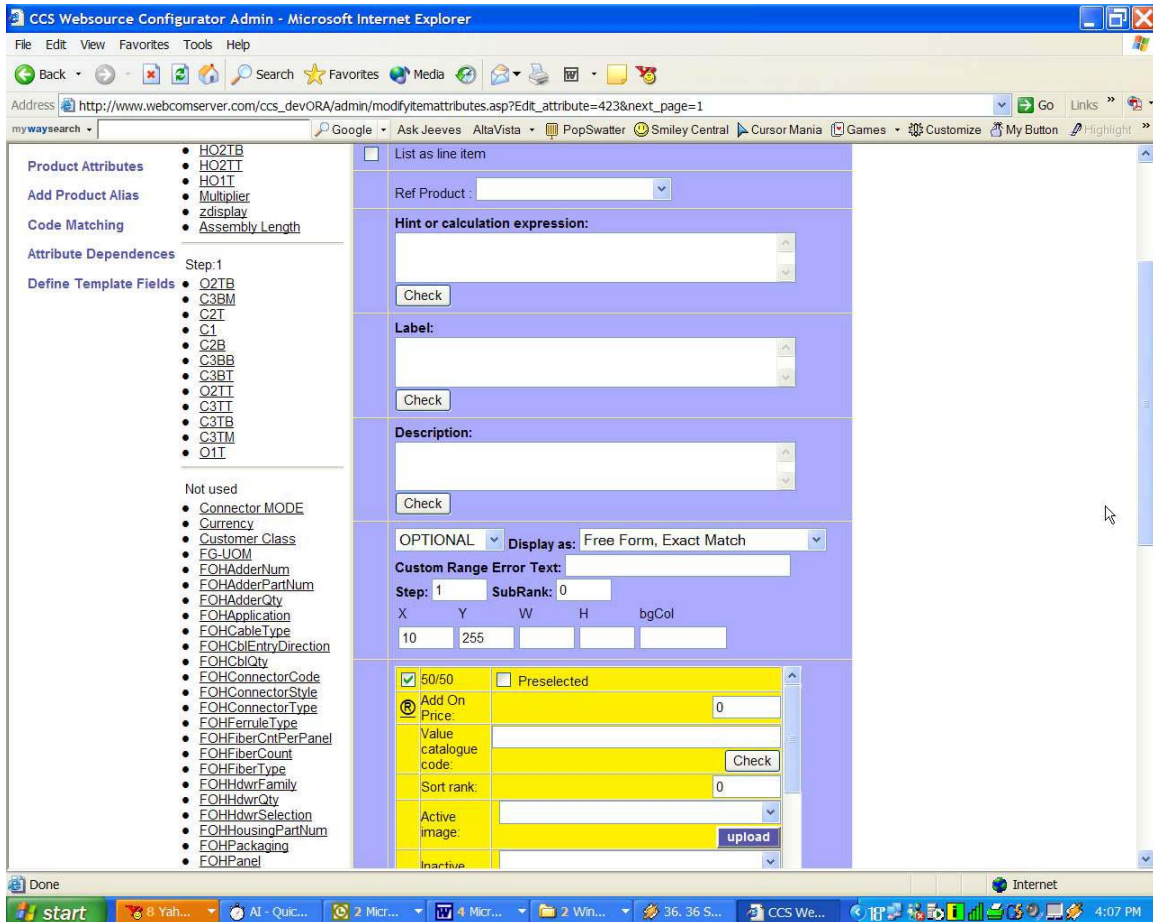


Figure 17-4 Graphical Placement of Attributes

User Side:

Below, Figure 17-5 is an example how attributes can be position in a left to right tree structure on the screen. Please note that some attributes in the below example have been designated as "Display as": Display only, therefore user can view those attributes but cannot edit them.

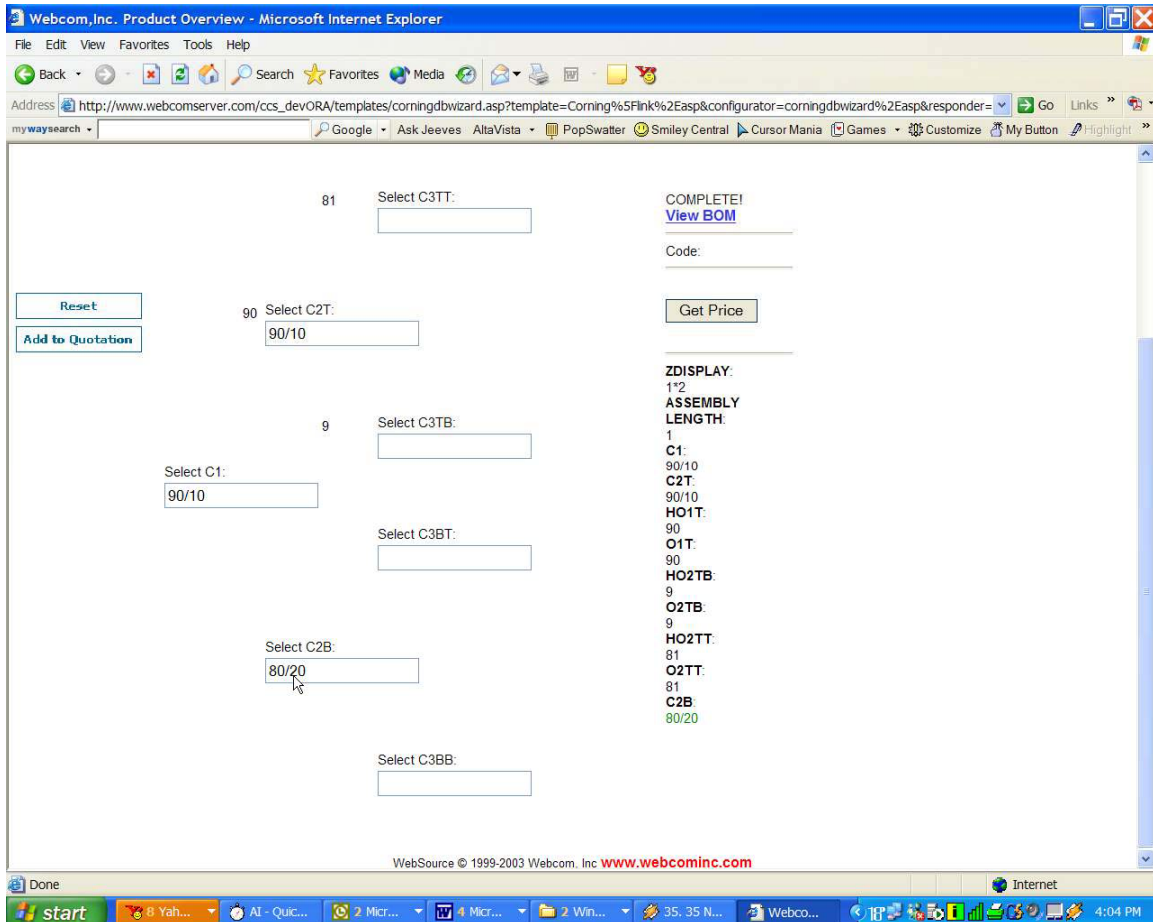


Figure 17-5

Following Graphical Placement are the attribute values associated directly with the product that is being defined. The attribute values that are associated with the specific product need to be selected and additional information completed to model the information for the product. It should be noted that frequently not all values of an attribute are used as can be seen under "Not Used" below the last step.

The first line of the attribute has a check box followed by the attribute display value. If the particular attribute value is needed for the specific product, select the check box. Note if all the attribute values will be used in the product a "Select All" button is available at the top of the page (Figure 17-1). This button only selects the values to be displayed to the user. Additional product specific information still needs to be completed.

At the end of the first line there is a second check box labeled “Pre-selected.” If there is a “Default” value, select this box.

The next line is “Add On Price.” The base price of the product was defined in “Product Definition” Figure 15-1. Fill in the pricing adder of this particular attribute value.

Value Catalog Code – Fill in the value associated with this particular product attribute that is used to define it in the catalog number structure. Refer to Product Definition, page 15-3, for details.

Sort Rank –It is not necessary that the attribute value appear in the same order as listed in the attribute value definition list. This sequence can be modified for the user by inserting the desired sequence display rank here. Display rank is shown low to high.

The following attribute descriptions refer to Figure 17-6 which is found on the next page.

Active Image – This image will appear in place of the attribute display value in the configurator. The user can make selection based on images.

Inactive Image – This value is not used in the configurator. It is displayed in the responder and is therefore Inactive for configuration.

Default Quantity – If the attribute needs a quantity and the default quantity is other than “1,” fill in the quantity.

Price Calculation Expression – If the price adder for the attribute value is not static and is related to other attributes, the formula that calculates the price is filled in here

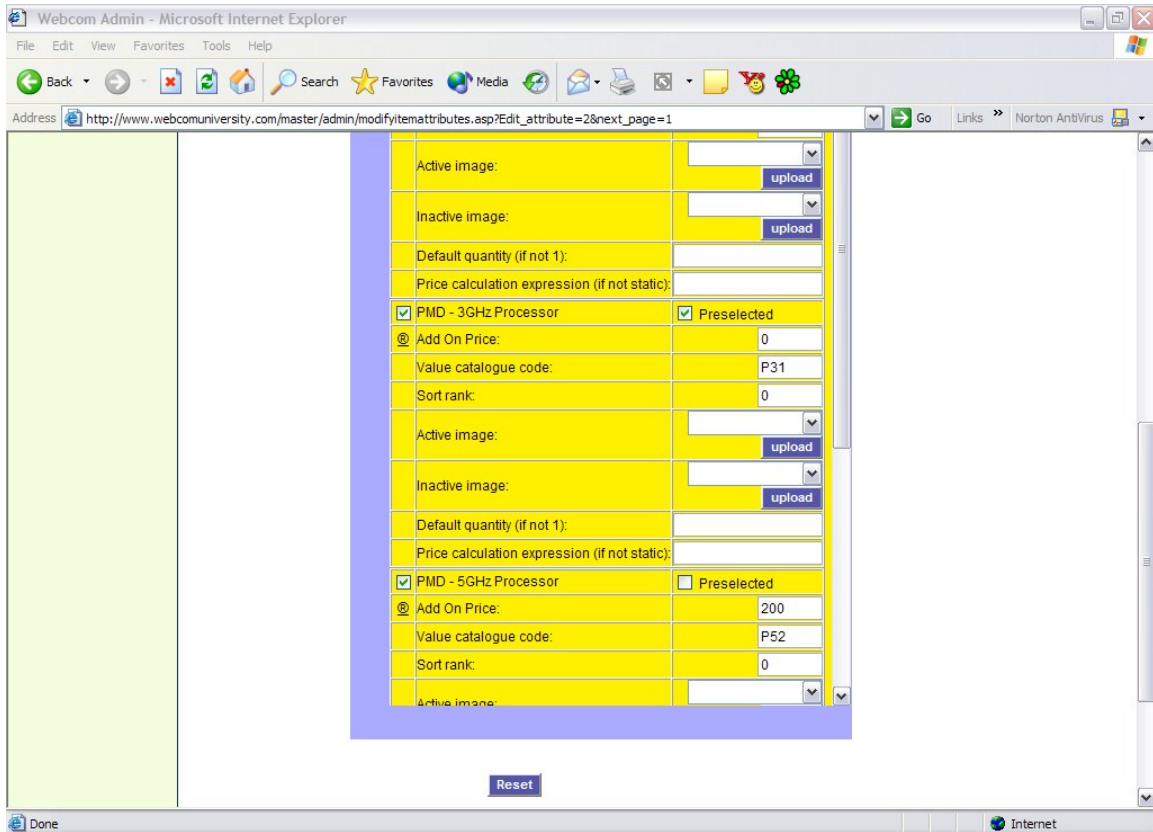


Figure 17-6 Define Product Attribute Values