

MODULE MODELING

24 PRODUCT EXPORT/IMPORT

Product Export/Import is used to replicate the product definition. It is typically used if there are two products that are similar, where the administrator can model one product, export it and then import it, in essence, making a copy of it. It is also used to move products from one installation to another, or to move product models from development to test environment, or from test to production environment.

In order to export a product, select the product Export/Import link under the Add-ons menu.

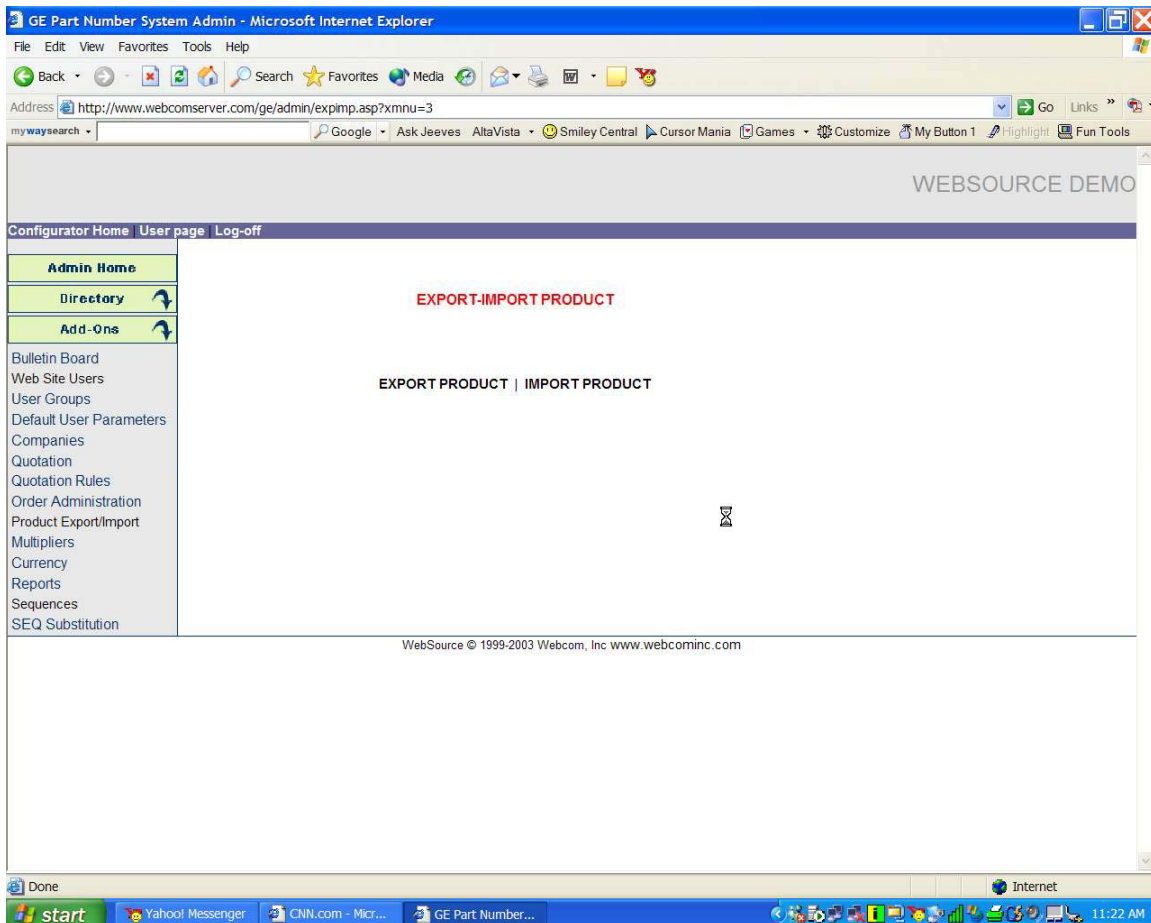


Figure 1-1 Export/Import Product

The screen shown in Figure 1-1 will allow an administrator to choose the export or import option. If the “Export Product” option is selected, a dropdown with a list of all products will be presented and is shown in Figure 1-2.

Select the product to be exported from the drop down list and then click “Export.”

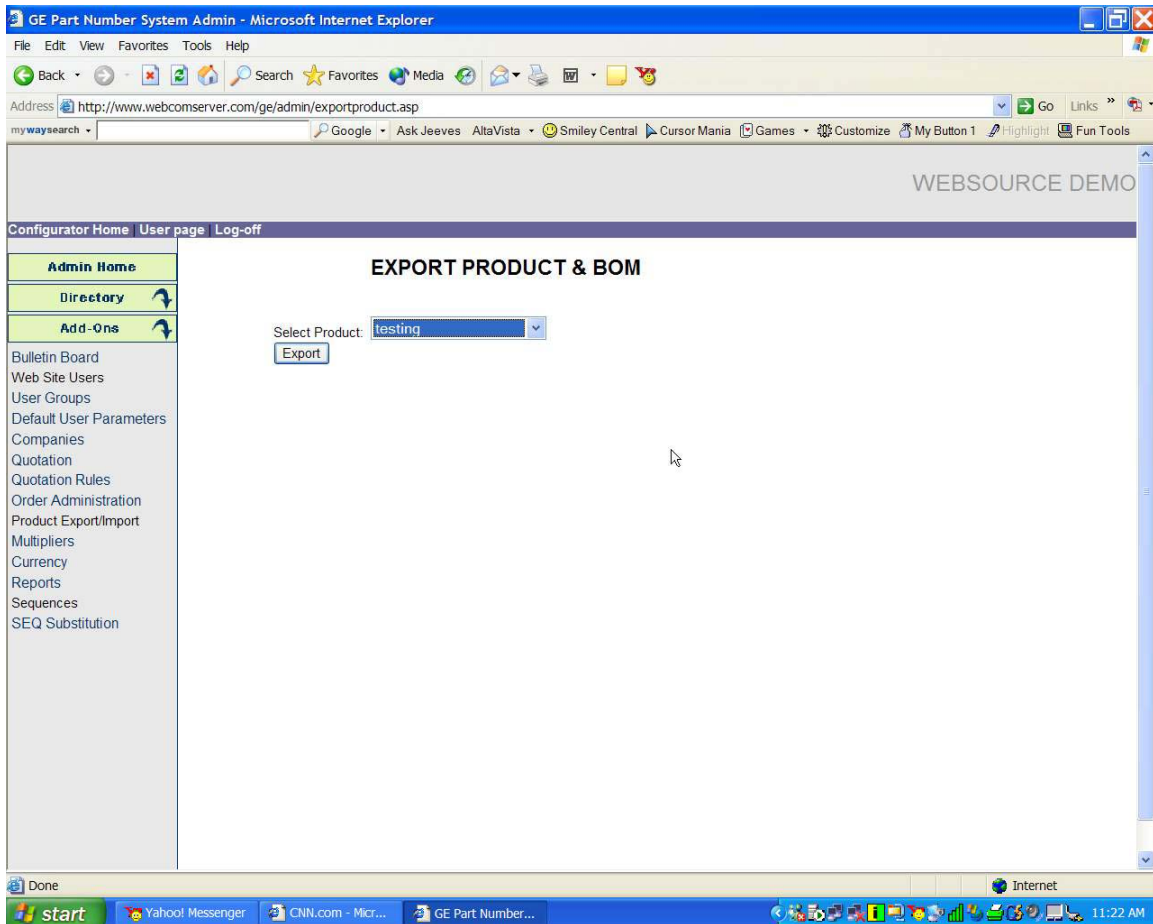


Figure 1-2 Export Product and BOM

The software will create a compressed XML file representing product definition (attributes, rules, etc.). The file list included in the XML, is shown in the background of Figure 1-3.

This XML file needs to be downloaded so that it can be uploaded to a desired destination. Click on the “Download” link on the second last line of the file list. The “File Download” text box will appear. Select the “SAVE” button.

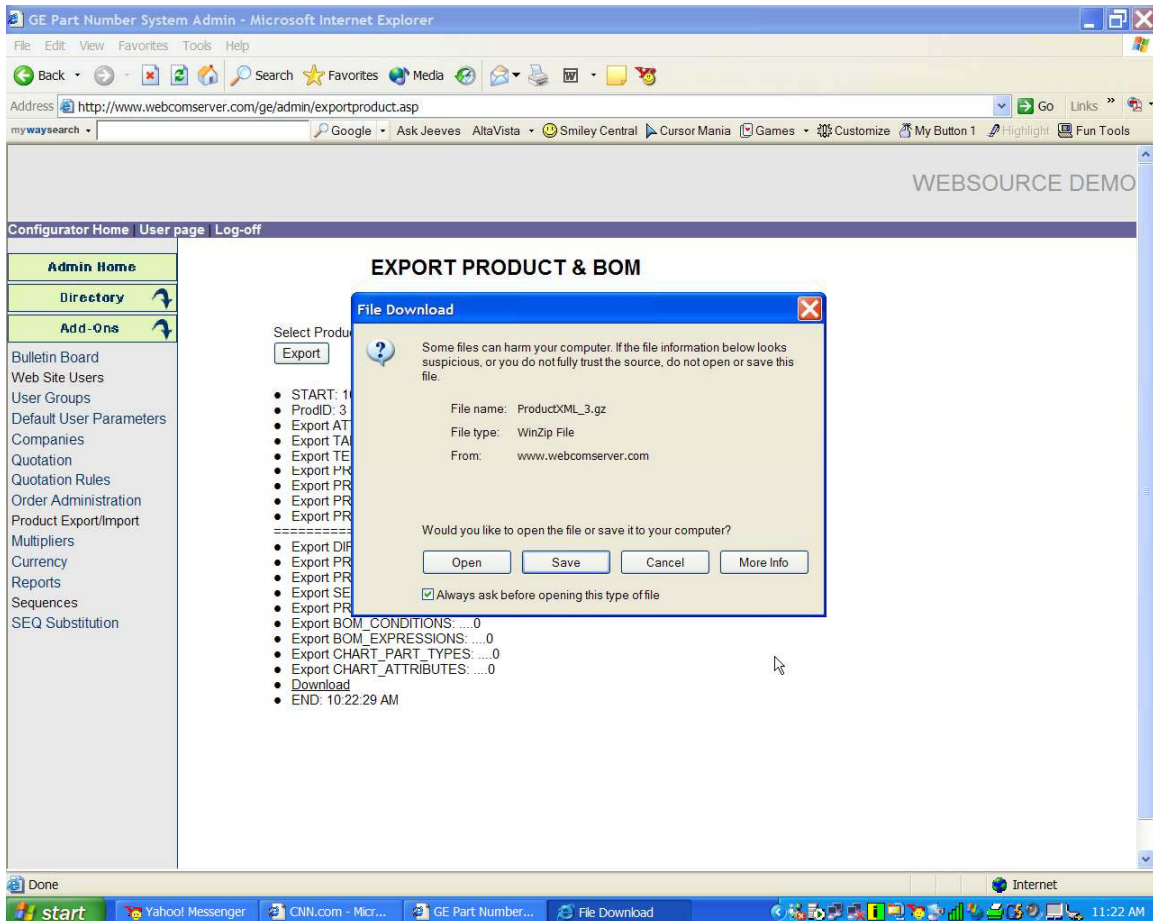


Figure 1-3 Export File Save

IMPORTANT: After saving the file, the administrator needs switch to the product export/import page of the installation where the product needs to be imported into.

In order to import a product, the administrator can either select from the list of existing (compressed) xml files, or from another previously downloaded (exported) product file. Select the product to be imported, the Category where it is to be imported and click “Import” button as shown in Figure 1-4. If there is a Bill of Material to import click the “BOM” check box.

The administrator can select the category where the file will be located after the file has been uploaded by selecting that file and then selecting the Category where it will be imported. Next, the administrator needs to click on the "Import" button.

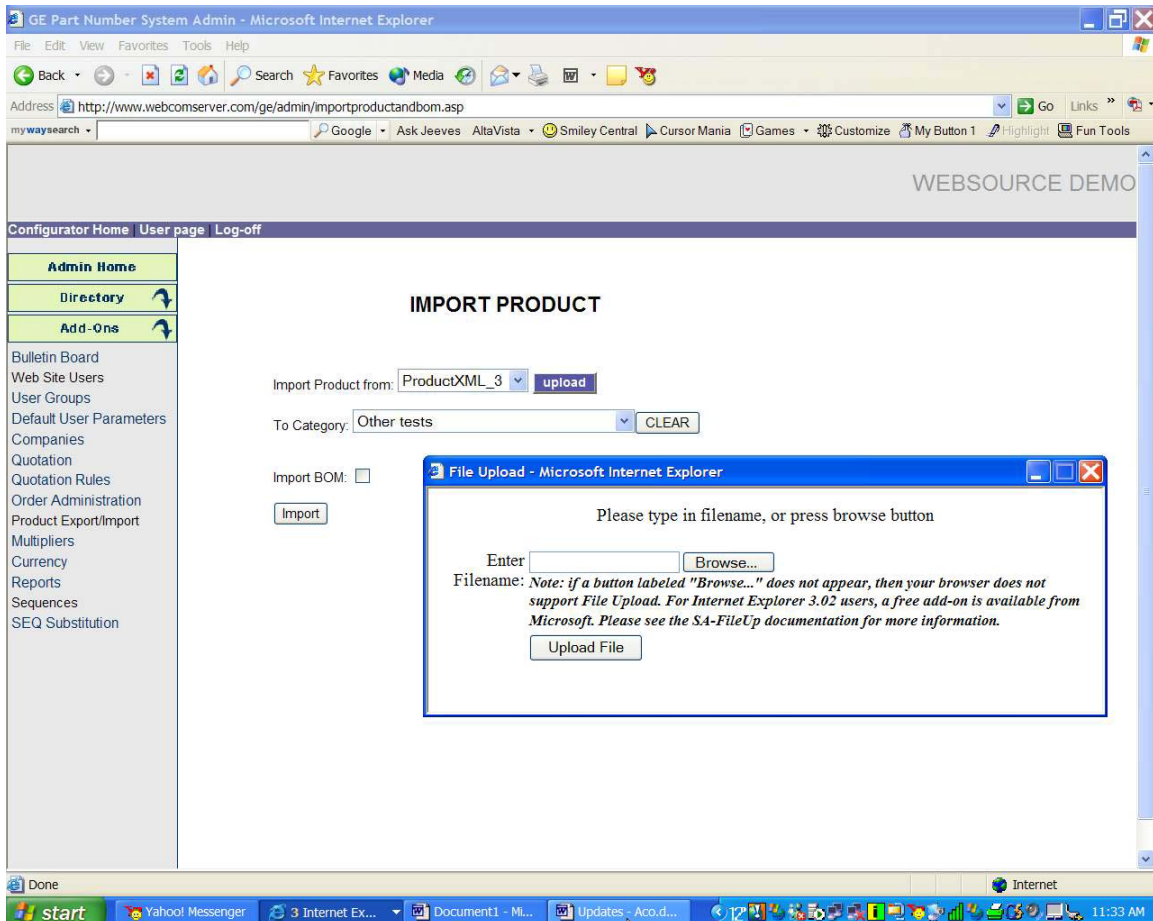


Figure 1-4 Import Product

The imported products are automatically hidden from all user groups. Before these files can be viewed, the administrator needs to go to the product administration section for this product and select user groups that can view this product.