

Figure 15-2 Product Definitions

Product Catalog Code Generator – The Catalog Number is described as a string of letters, numbers and punctuation that defines a unique product item. Other names are Part Number, Model Number, Model String Number or Long Part Number.

This distinct number is defined in this field. The catalog number can be built using text, spaces, punctuation and the WebSource power tags.

Here is an example: C21-<* CatCode(Processor) *><* CatCode(Memory) *><* ValueCode(Hard Drive) *><* CatCode(CD or DVD Drive #1) *><* CatCode(CD or DVD Drive #2) *><* CatCode(Operating System) *><* Value(Warranty) *><* CatCode(Monitors) *><* ValueCode(Multimedia) *><* CatCode(Software) *><* Value(Hardware) *>. The resulting catalog number might look like:
 C21-P31M13H22-DVD64-WP03-W1S

Product Image – Upload. This image appears on the user product page after the Product Name and before the description. If the full path to the image is not known, select “upload.” This will allow browsing the hard drive or network for the image and after selected upload the image. “Modify/Approve” shown in Figure 7-1 must be selected to complete this change. To remove an image, go to and select the top drop down which is blank and “Modify/Approve” the change.

Product Price – This field is required. Fill in the value equal to the base price of the product. If there is no base price “0” is a valid entry.

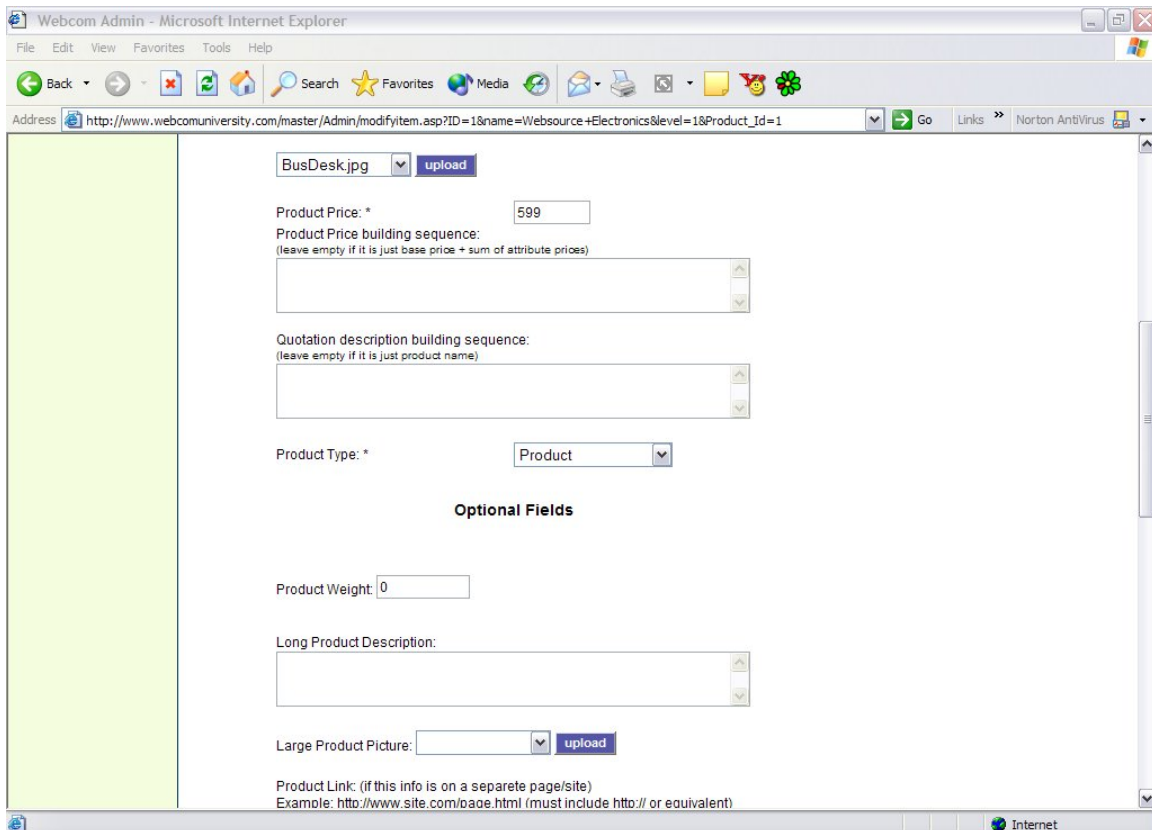


Figure 15-3 Product Definitions

Product Price Building Sequence – This field contains logic associated with building a product price that is not a simple base product plus adders. Details can be found in Product Price Building Sequence

Quotation Description Building Sequence - This field gives the ability to provide a dynamically generated description which is automatically added to the Item Bin / Shopping Cart. Details can be found in Quotation Description Building Sequence.

Product Type – This field is a required. Select appropriate Product Type from Drop Down. A number of Product Types such as Product, Software, Services, Consulting are predefined. Product type is used to further categorize products. The Product Type is typically used when there are special pricing rules, which are applied to specific types of products.

Product Weight – Enter product weight here. This can be used to provide information to users or in calculating shipping charges.
Long Product Description – This is a standard field but may not be available for display as it is not part of the default templates. Templates can be designed to use this field. If available in a template, type in a long product description here.

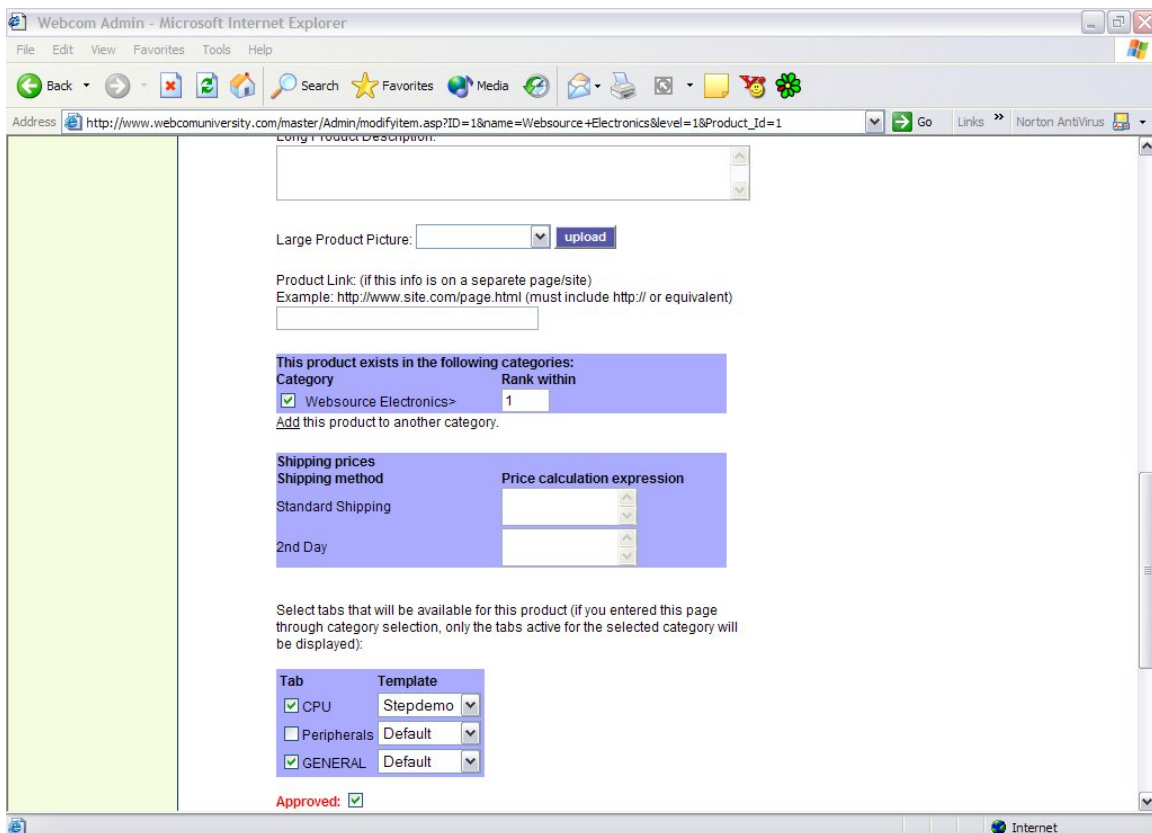


Figure 15-4 Product Definitions