

PRODUCT MODELING SPECIFIC PRODUCT PARAMETERS

14 GENERAL NAVIGATION

After logging into the WebSource Configurator the Administration page is displayed. The left hand has a link (Admin Home) and two drop downs (Directory and Add-Ons). Clicking on "Directory" opens the drop down. This was shown in Figure 3-1 page 3-3.

Adding, Deleting or Modifying a Product is started from the Product Administration page, which is opened by selecting the "Products" link under the "Directory" drop down. In the center of the screen will be a list of the Categories, as shown in Figure 14-1. In this example only one category is shown, Webcom Electronics.

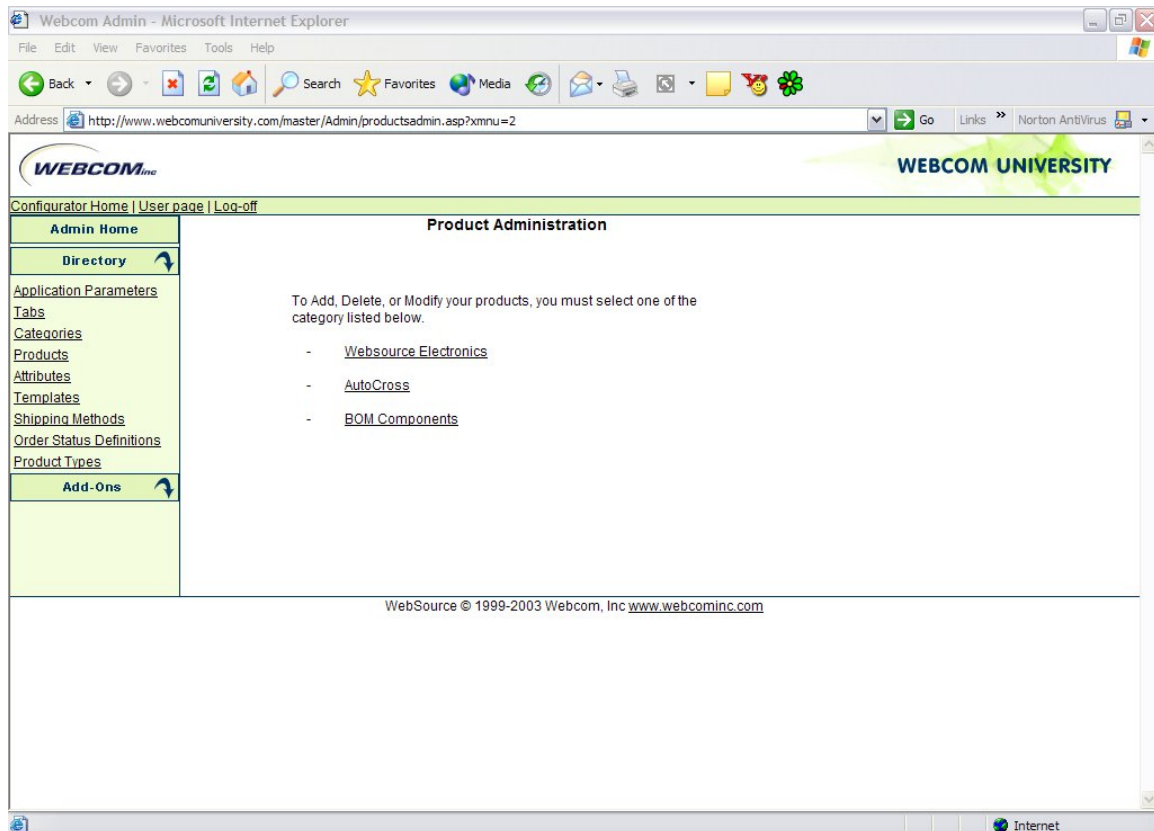


Figure 14-1 Product Administration

Selecting the Category from this list will bring up the Product Administration page that displays any current products for that Category (Websource Electronics) as shown in Figure 14-2.

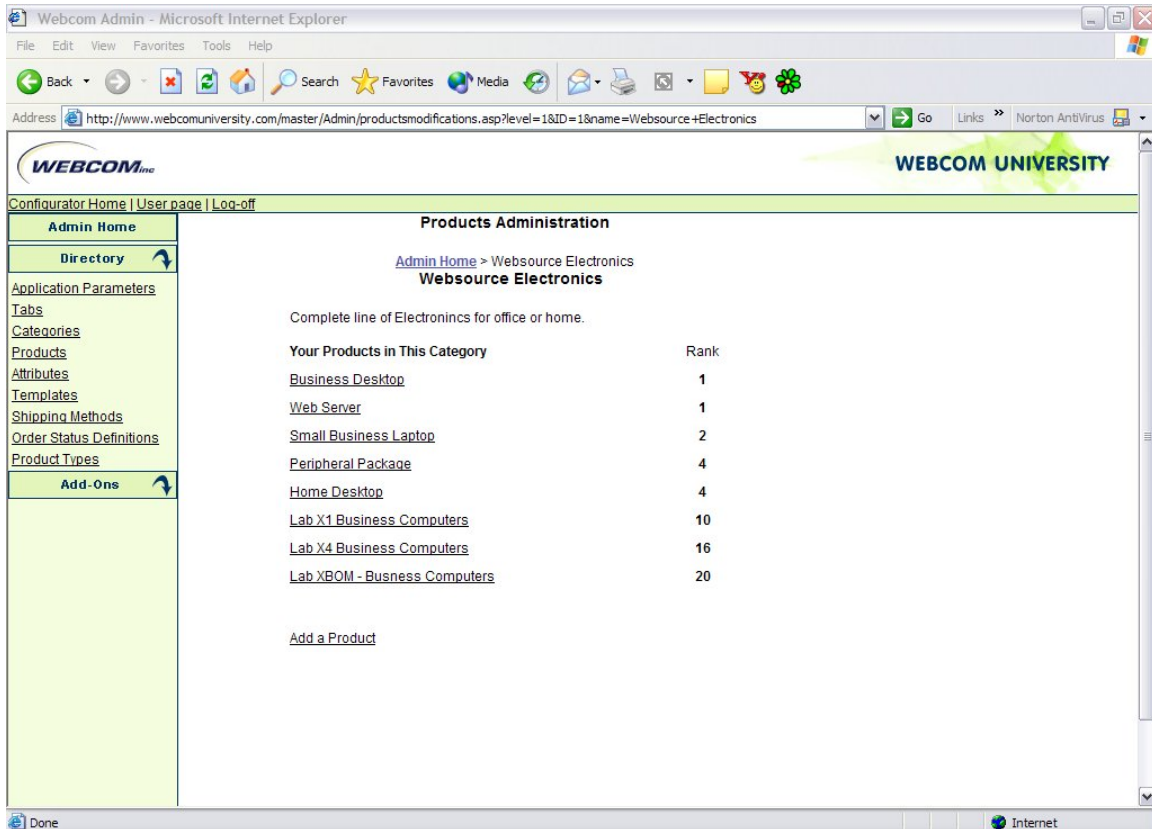


Figure 14-2 Product Administration

From here existing products can be modeled or updated. And additional Products can be "Added".

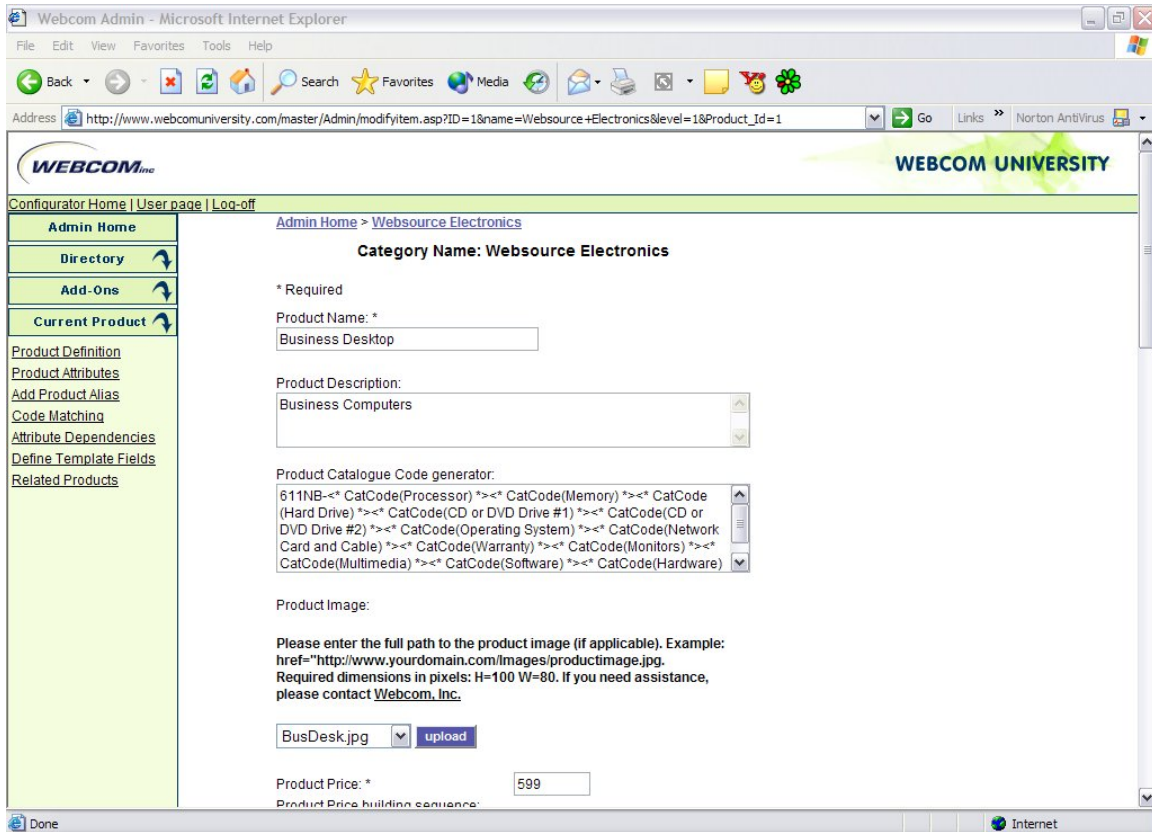


Figure 14-3 Product Definitions



Figure 14-4
 Current Product

Selecting a Product brings up Figure 14-3. A new drop down “Current Product” appears,

This is shown in detail in Figure 14-4. This drop down is not shown when doing “global” modeling and appears only when modeling a specific product.

The links listed here only apply to the product that was selected from the Directory/Product page.

To select a different product, select the “Directory” drop down, then the “Product” category and finally the desired product.