

RELATED PRODUCTS

If there are products that are associated with another product, these can be displayed to the user by adding Related Products. Related Products Definition can be accessed under the **Current Products** drop down through the **Related Products** link. The initial screen is shown in Figure 21-1.



Figure 21-1 – Related Products

After selecting **Add new** the pop up shown in the lower right hand corner of Figure 21-2 appears. Simply select the related product to add it.

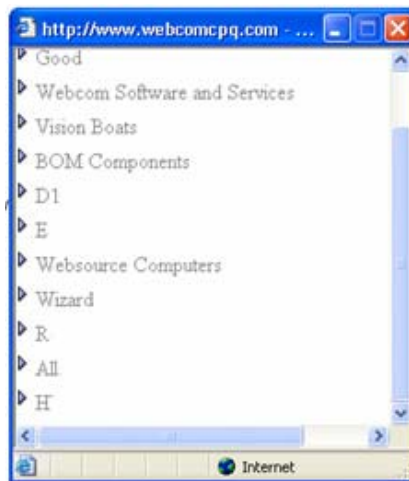


Figure 21-2 – Select Product to relate to

The related product must also be defined in the template, to be accessible by the user.

If the Related Products Link should not be shown in Admin, then global.asa file must be changed. In Application_OnStart section add

```
Application("USE_RELATED_PRODUCTS")=False
```

In order to show Related Products Link add

```
Application("USE_RELATED_PRODUCTS")=True.
```