

## SELECT TABS AND TEMPLATES

On the Product Definition page the Tabs which will be displayed to the users and Templates associated with those Tabs must be selected. An example is shown in Figure 22-6

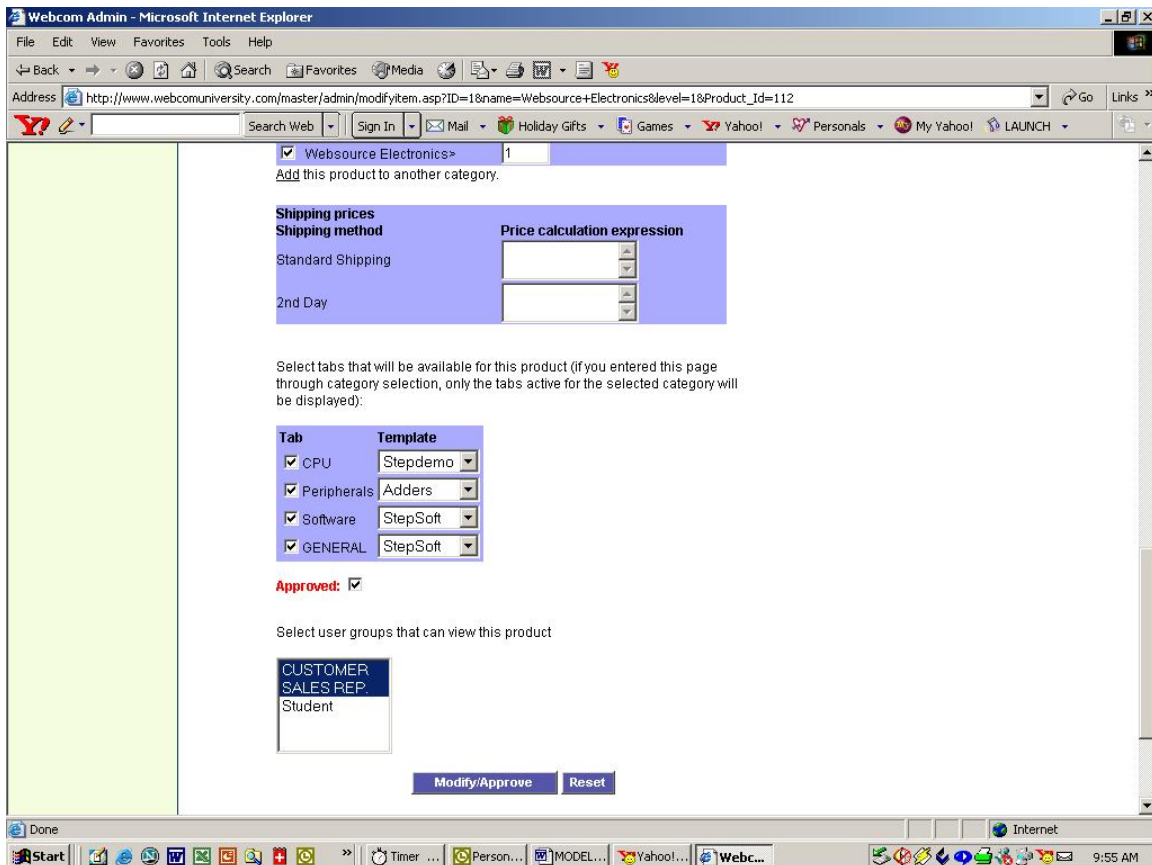


Figure 22-6 Select Tabs and Templates

The three Templates chosen here were set up for Steps. Make sure the “Approved” check box is selected before pressing the “Modify/Approve” button.

Now the attribute must be placed into their proper steps and setup. Selecting “Product Attributes” from the Link column, opens the Define Attributes page which is shown in Figure 22-7.

Just to the left of the attribute setup form, the example shows the attributes that have been associated with Steps 111,121,211 and 251. This is accomplished inserting the proper Step and Rank number in the available field. For Processor the example shows Step: 111 and Rank:1.

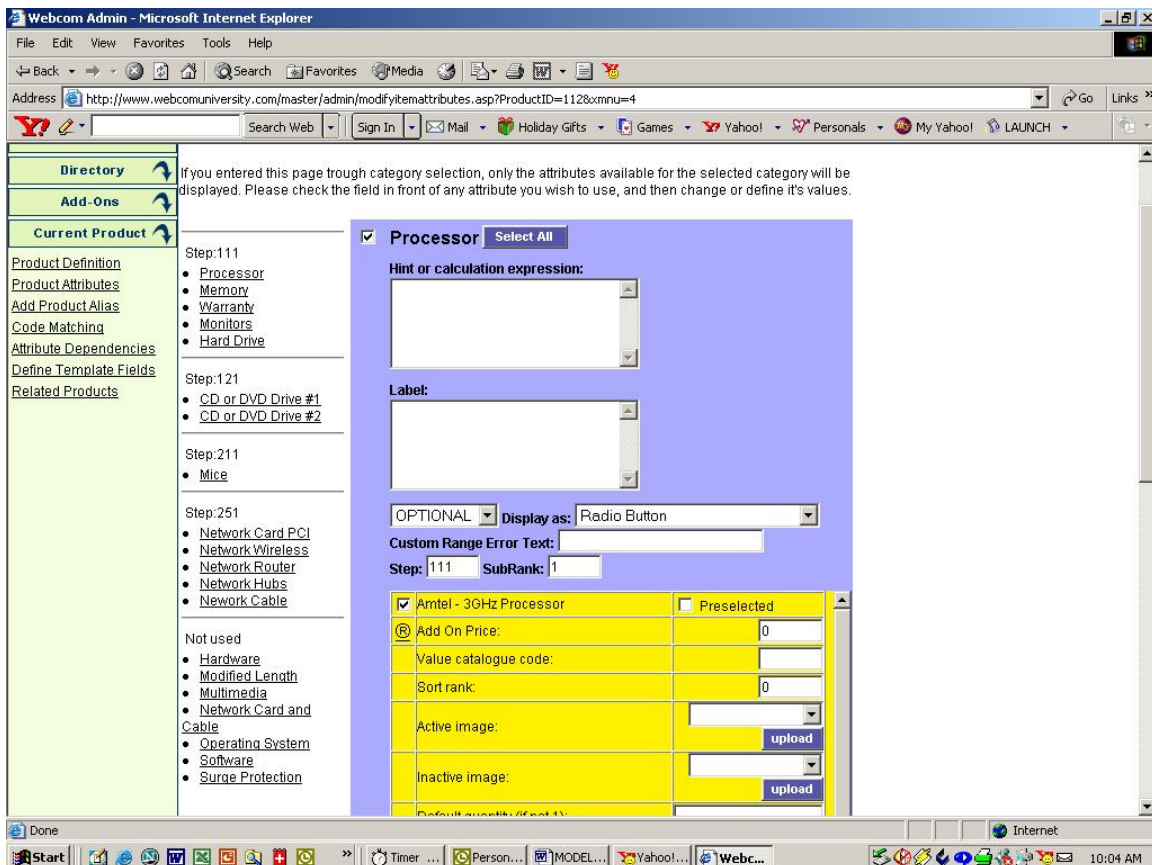


Figure 22-7 Assign Steps and Rank

The remaining attribute fields are completed as described in Defining Product Attributes section of the manual. The Template Fields must also be setup as shown in Define Template Fields section.