

Figure 17-4 Graphical Placement of Attributes

User Side:

Below, Figure 17-5 is an example how attributes can be position in a left to right tree structure on the screen. Please note that some attributes in the below example have been designated as "Display as": Display only, therefore user can view those attributes but cannot edit them.

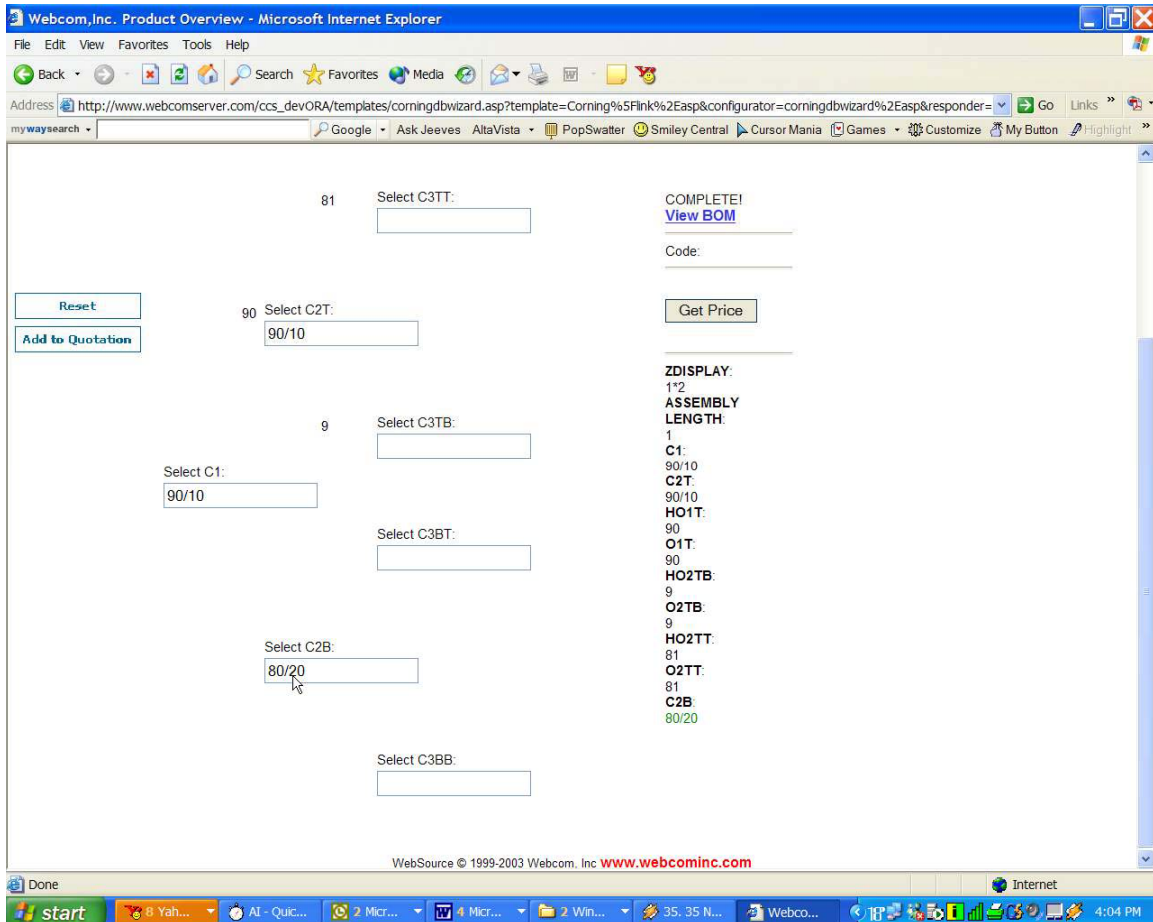


Figure 17-5

Following Graphical Placement are the attribute values associated directly with the product that is being defined. The attribute values that are associated with the specific product need to be selected and additional information completed to model the information for the product. It should be noted that frequently not all values of an attribute are used as can be seen under "Not Used" below the last step.

The first line of the attribute has a check box followed by the attribute display value. If the particular attribute value is needed for the specific product, select the check box. Note if all the attribute values will be used in the product a "Select All" button is available at the top of the page (Figure 17-1). This button only selects the values to be displayed to the user. Additional product specific information still needs to be completed.

At the end of the first line there is a second check box labeled "Pre-selected." If there is a "Default" value, select this box.

The next line is "Add On Price." The base price of the product was defined in "Product Definition" Figure 15-1. Fill in the pricing adder of this particular attribute value.

Value Catalog Code – Fill in the value associated with this particular product attribute that is used to define it in the catalog number structure. Refer to Product Definition, page 15-3, for details.

Sort Rank –It is not necessary that the attribute value appear in the same order as listed in the attribute value definition list. This sequence can be modified for the user by inserting the desired sequence display rank here. Display rank is shown low to high.

The following attribute descriptions refer to Figure 17-6 which is found on the next page.

Active Image – This image will appear in place of the attribute display value in the configurator. The user can make selection based on images.

Inactive Image – This value is not used in the configurator. It is displayed in the responder and is therefore Inactive for configuration.

Default Quantity – If the attribute needs a quantity and the default quantity is other than "1," fill in the quantity.

Price Calculation Expression – If the price adder for the attribute value is not static and is related to other attributes, the formula that calculates the price is filled in here

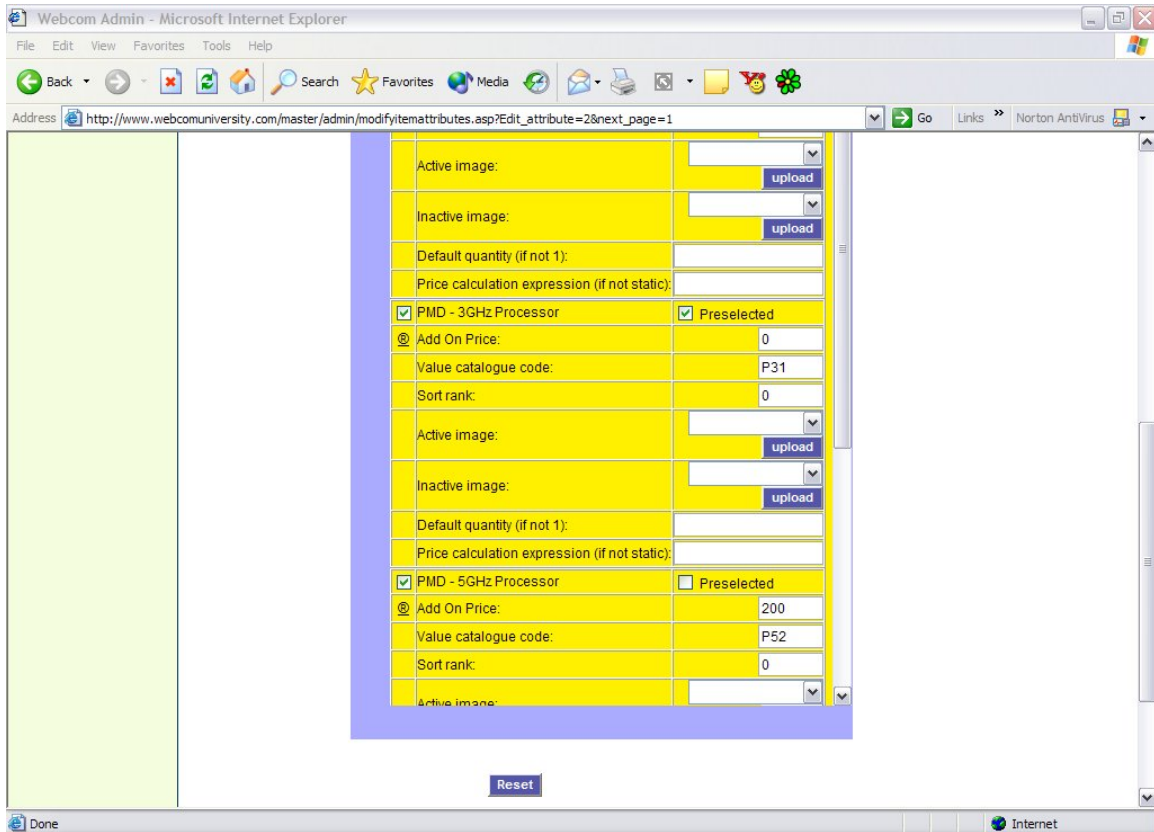


Figure 17-6 Define Product Attribute Values